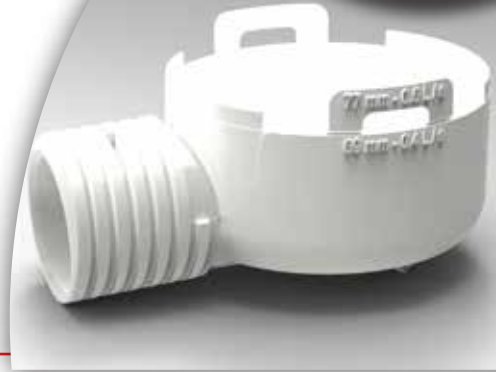


## FACT SHEET

The Marley Universal Shower Trap is an innovative shower trap solution for 40mm and 50mm vertical and horizontal outlets.

### Features and benefits of the Marley Universal Shower Trap:

- Space saving and optimised flow
- Two possible adjustments for height
- 360° rotation, to allow for a symmetrical finish that lines up with the tile pattern
- An integrated slope to channel water flow
- Horizontal and vertical installations
- Ease of access for cleaning post installation

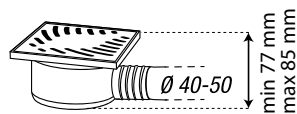


## INSTALLATION INSTRUCTIONS

The Marley Universal Shower Trap offers the choice of a vertical or horizontal outlets.

### Horizontal Outlet

a) 40mm - Apply PVC Solvent Weld to the inside of the horizontal outlet of the shower trap and to the outside of the 40mm pipe. Insert the 40mm pipe into the shower trap outlet. Allow to dry



b) 50mm - Apply PVC Solvent Weld to the outside of the horizontal outlet of the shower trap and to the inside of the 50mm Socket. Push the 50mm PVC Socket over the shower trap outlet. Allow to dry.

### Vertical Outlet



a) Remove the horizontal bottom outlet section of the shower trap.

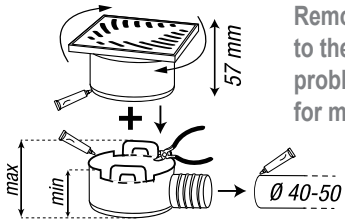
b) Apply PVC Solvent Weld to the inside of the 40mm PVC Socket. Attach to the vertical outlet of the shower trap.

c) Apply PVC Solvent Weld to the outside of the 50mm pipe, attach to the vertical outlet of the shower trap.



# INSTALLATION INSTRUCTIONS

## 1. Height Adjustment & Rotation

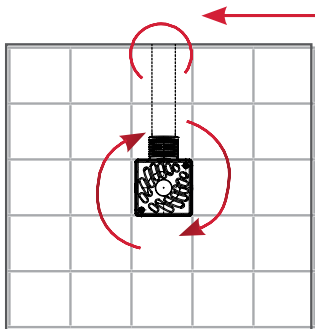
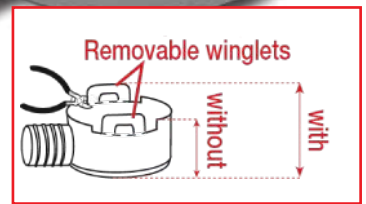


Remove winglets by hand or pliers to the required height, if space is no problem, keep the winglets attached for maximum flow.

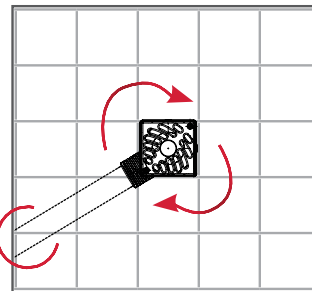
The design allows for an adjustment of 360°, to suit alignment with tiles and the direction of the outlet.

System with 2 independent parts:

The combination of the vertical Universal Shower Trap and the new adaptor with horizontal outlet allows you to connect to the main drainage network in all configurations, without using a set of elbows (fewer connections, therefore faster). This system allows you to keep the positioning of the grid parallel to the walls.



Location of the connection to the drainage network (top view)



## 2. Integrated Slope

Using the adaptor allows for space saving, and ensures that a level installation is achieved while maintaining a slope (2° 30') allowing for a better drainage.

Slope created by the adaptor to facilitate drainage and prevent water retention and stagnation.

