

Folding Doors



So Practical and So Stylish

www.marleypipesystems.co.za





Create your own dream rooms...

... so practical and so stylish: Marley folding doors simply bring more space to the room!

Marley folding doors bring increased space in an elegant manner and open up fantastic layout possibilities as no swivelling range is required for the door leaf. Use Marley folding doors everywhere, from your living room or office, to your bathroom. Increase the functionality of your living or work area by utilising a Marley folding door for space management, dividing your room into sections for specific purposes. The choice of design, decors and dimensions is completely unique.

All Marley folding doors have the following in common:

- The perfect harmony of appealing looks and robust mechanics
- No floor slide, but a discretely integrated upper slide rail
- High-grade plastics and printing processes ensuring easy-to-clean surfaces
- Highly attractive and affordable
- Clear-cut assembly instructions to make life simple for the DIY-enthusiast
- Marley has over 50 years of experience in designing and manufacturing functional folding doors
- The wide variety of Marley folding door designs ensure a perfect match to meet every need
- Long-lasting colour
- The material used is of a high quality and is dense in property
- May be used in bathrooms, as all Marley folding doors are steam resistant

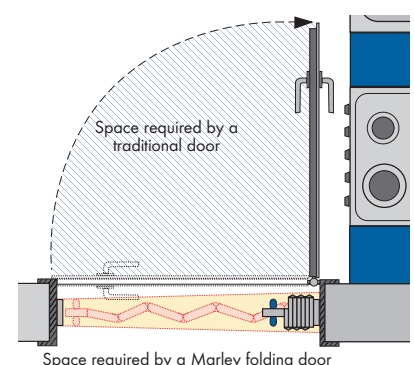
Marley: 10 Year Guarantee

Our folding doors are Marley guaranteed for 10 years. Don't leave anything to chance, get the original, there's only one Marley ensuring best quality!

- ➔ Impact-resistant, long lasting, high-quality plastic
- ➔ Optimal form stability and fitting accuracy
- ➔ Manufactured by Marley at high quality standards



Easy space saving! Conventional doors devour valuable space with their swing area. With a folding door, the living space can be utilised to its optimum*.



* when professionally installed and used indoors. See www.marleypipesystems.co.za

More light, more colours, more choice

New Generation – cool and trendy! Communicating a new form and colour range for folding doors, here functionality meets design at the highest level. An opportunity for creative minds. The new dimension for the stylistically aware.

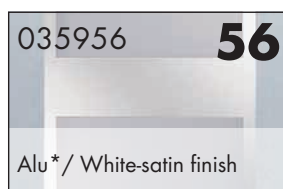
- Decors: White/White-satin finish, Aluminium/White-satin finish, Beech/White-satin finish - Checked pattern
- Height 205cm - can be shortened as required
- Width 86cm
- Can be used as a one or two wing door with various widths (one-wing: 86cm; two-wing: 167cm, expandable to 400cm), by adding additional lamellas
- Includes a modern handle in a metal finish
- Lamellas - 11cm and double wall profile
- Hinges are made with a high quality, flexible plastic that allow for smooth and quiet operation and ergonomic design effectiveness



Decors



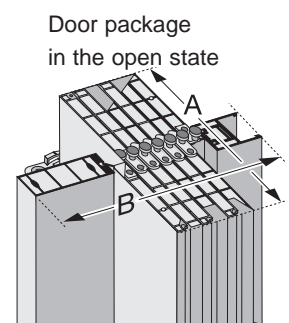
Checked Pattern



Checked Pattern



Checked Pattern



A = 15,8 cm

B = 17,6 cm

+ 1,2 cm per additional lamella

* Replica

Always the right choice

This "President" goes with every household - whether as a standard door size or an individually selected special format, the Marley President has a convincing answer to all questions of sophisticated room division.

Standard Door:

- Decors: White-ash, Oak
- Height 205cm - can be shortened as required
- Width 86cm
- Can be used as a one or two wing door with various widths (one-wing: 86cm; two-wing: 167cm, expandable to 400cm), by adding additional lamellas
- Includes a lock mechanism
- Lamellas - 11cm and double wall profile
- Hinges are made with a high quality, flexible plastic that allow for smooth and quiet operation and ergonomic design effectiveness
- Includes a matching panel to cover the slide rail



Decors

With Glass

037035

45

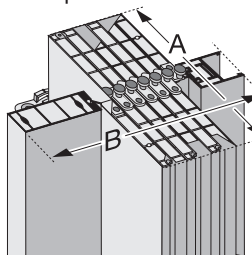
White-ash*

037042

44

Oak*

Door package in the open state



A = 15,8 cm
B = 17,6 cm
 + 1,2 cm per lamella

* Replica



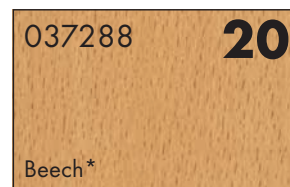
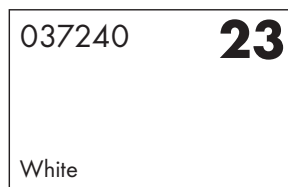
Open for movement

The perfect modern look. Precise operation at a fair price - for people with style.

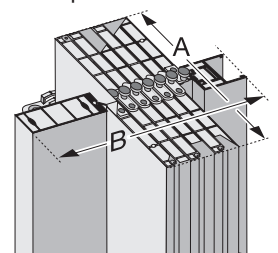
- Decors: White, Beech
- Height 205cm - can be shortened as required
- Width 83cm
- Door widths up to 83cm, expandable to 150cm through additional lamellas
- Includes a lock mechanism
- Lamellas - 9cm and double wall profile
- Hinges are made with a high quality, flexible plastic that allow for smooth and quiet operation and ergonomic design effectiveness
- Includes a matching panel to cover the slide rail



Decors



Door package in the open state



A = 11,9 cm

B = 17,1 cm

+ 1,0 cm per lamella

*Replica



Room division in an instant

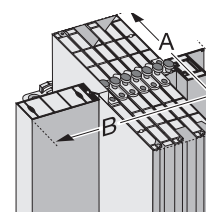
Everything a modern door should provide - a wonderful appearance, space-saving, reliability, functionality and fast do-it-yourself assembly. The price will more than tempt you to take it with you.

- Decors: White-ash, Wood imitation
- Height 205cm - can be shortened as required
- Width 88cm
- Hinges are made with a high quality, flexible plastic that allow for smooth and quiet operation and ergonomic design effectiveness
- Includes a matching panel to cover the slide rail

Decors



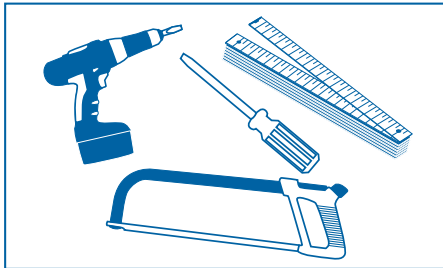
Door Package in the open state



A = 11,3 cm

B = 18,0 cm

Easy Installation - The Essential Steps



Required Tools



Measure the door opening
(width and height)



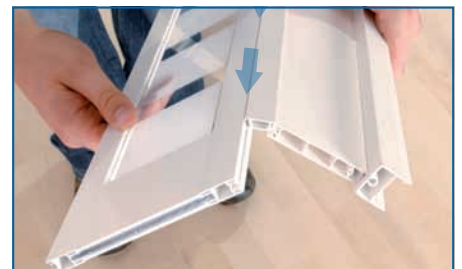
Transfer measurements
(installation instructions are
included with the folding door)



Cut the profile to the required
length



Only on folding doors with glass inserts
Glue the end panels with
double-sided tape at the bottom of
the shortened plates



Assemble the different parts



Fastening of the clip (included
with the folding door)



Clip in the door

**USE LUBRICANT GEL
ON RAIL TRACK**

www.marleypipesystems.co.za

Expansion capabilities for standard doors:

| New Generation | | | | | | President | | | | | | Eurostar | | |
|-----------------------|--------------|---------------------|-----------------------|--------------|---------------------|-----------------------|--------------|---------------------|-----------------------|--------------|---------------------|-----------------------|--------------|---------------------|
| one-wing folding door | | | two-wing folding door | | | one-wing folding door | | | two-wing folding door | | | one-wing folding door | | |
| Width in cm | No. of Doors | Additional lamellas | Width in cm | No. of Doors | Additional lamellas | Width in cm | No. of Doors | Additional lamellas | Width in cm | No. of Doors | Additional lamellas | Width in cm | No. of Doors | Additional lamellas |
| up to 86 | 1 | - | up to 167 | 2 | - | up to 86 | 1 | - | up to 167 | 2 | - | up to 83 | 1 | - |
| up to 100 | 1 | 1 | up to 196 | 2 | 2 | up to 100 | 1 | 1 | up to 196 | 2 | 2 | up to 95 | 1 | 1 |
| up to 114 | 1 | 2 | up to 225 | 2 | 4 | up to 114 | 1 | 2 | up to 225 | 2 | 4 | up to 107 | 1 | 2 |
| up to 128 | 1 | 3 | up to 254 | 2 | 6 | up to 128 | 1 | 3 | up to 254 | 2 | 6 | up to 119 | 1 | 3 |
| up to 142 | 1 | 4 | up to 283 | 2 | 8 | up to 142 | 1 | 4 | up to 283 | 2 | 8 | up to 131 | 1 | 4 |
| up to 156 | 1 | 5 | up to 312 | 2 | 10 | up to 156 | 1 | 5 | up to 312 | 2 | 10 | up to 143 | 1 | 5 |
| up to 170 | 1 | 6 | up to 341 | 2 | 12 | up to 170 | 1 | 6 | up to 341 | 2 | 12 | up to 150 | 1 | 6 |
| up to 185 | 1 | 7 | up to 370 | 2 | 14 | up to 185 | 1 | 7 | up to 370 | 2 | 14 | | | |
| up to 200 | 1 | 8 | up to 400 | 2 | 16 | up to 200 | 1 | 8 | up to 400 | 2 | 16 | | | |



Marley Pipe Systems (Pty) Ltd
1 Bickley Rd, Pretoriusstad,
Nigel

Tel: +27 11 739 8600
Direct: +27 11 739 8619
Fax: +27 11 739 8697

Dealer Stamp